

NINE MISTAKES TO AVOID WHEN CHOOSING YOUR KITCHEN UNITS

Regency
kitchen design ltd.



Avoid wall units that do not have concealed wall hanging brackets.



Beware of mass produced units that are not square and come apart easily due to lack of glue.



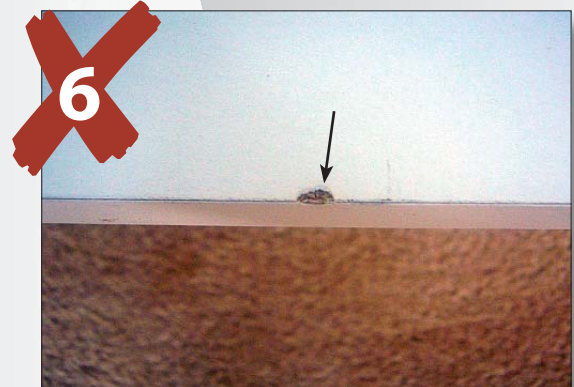
Avoid thin paper edging, this should always be Durable PVC.






Avoid thin back panels which are easily broken and pushed off during everyday use of your cupboards.



Beware of gaps which might attract small furry unwelcome guests into your cupboards by the smell of their favourite food.



Avoid units that are made from lower density material which will chip easily.

-  Avoid suppliers that do not have these size units available in: 150 – 350 -450 -900 -1100 -1200-sizes which seriously limit your planning options.
-  Avoid units that do not fully colour match the doors you have chosen.
-  Avoid bowed cupboards, make sure they are not flimsy, ie. 15mm sides and bottoms.

PLEASE REMEMBER - A SUPERIOR CABINET WILL LAST YOU AT LEAST 20 YEARS.